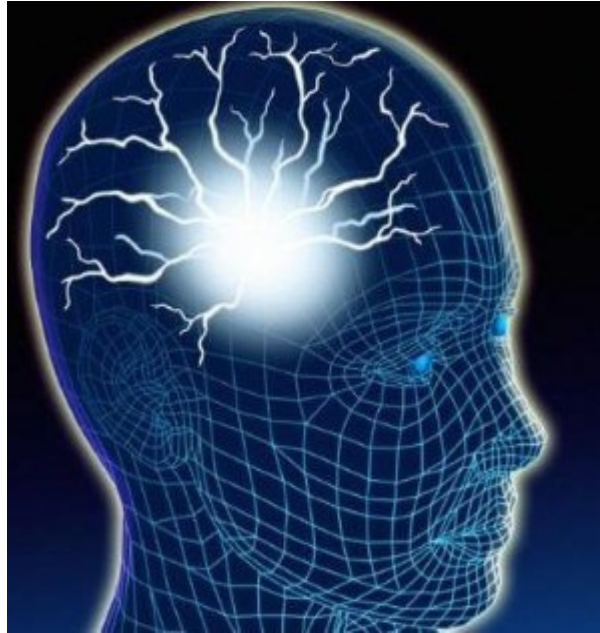


Epilepsy Education Forum



Friday, May 20th, 2016

7:30 a.m. —11:45 a.m.

**St. Luke's Boise Anderson Center,
5th floor Boise Room**

Connie Burten, BSN, RN

Barrow Neurological Institute

&

Lindsey Foy, MD

St. Luke's Pediatric Neurology

Who Should Attend:

Nurses

Nurse Practitioners

Medical Assistants

EEG Technologists

Social Workers

3.8 CNE Available

St. Luke's Health System is an approved provider of continuing nursing education by the Washington State Nurses Association Continuing Education Approval & Recognition Program (CEARP) An Accredited approver by the Ameri-

To register for this **FREE** event,
please email

wilsokim@slhs.org



stlukesonline.org